

# Welcome to Year 1



Maple Class – Mrs Baker



Willow Class – Miss Fitzgerald



# Our Topics



When?	Topic?	What?
Autumn	Happily ever after Paddington's Passport	History/PSHE, Art & Music Geography
Spring	Jurassic Hunter Come Fly With Me (Arctic)	History Geography, Science & PSHE History, Music & Dance
Summer	LAND AHOY! Light up the World	Geography & Science & PSHE Science

Enhanced learning

**Maths**  
L.O: Can I identify how many shapes are in a picture?  
Shape Monsters  
There are \_\_\_\_\_ squares.

**English**  
L.O: Can I use my phonics sounds to write words in a sentence?  
My monster is \_\_\_\_\_

**PSHE**  
L.O: Can I read emotions and match them to the pictures?  
L.O: Can I verbalise my own emotions?  
worried  
angry  
sad

Year 1  
Rainbow Challenge

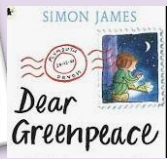
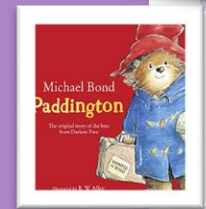
Sorting Colours  
Reading outside

**Art**  
L.O: Can I mix colours?

**Science**  
L.O: Can I sort objects into seasons?

See our curriculum letters on the [website](#) for more detailed information on the topics we study

# English and Maths



When?	English	Maths
Autumn Term 1	Writing to Entertain: Fairy Tales including 'Jack and the Beanstalk'	Place Value (within 10)
Autumn Term 2	Writing to Instruct: 'The Gingerbread Man' Writing Postcards: 'Paddington'	Addition and Subtraction Shape
Spring Term	Writing letters: Dear Greenpeace Writing to Inform: The Storm Whales	Place Value (within 20) Addition and Subtraction
	Writing to Entertain: 'Mad about Dinosaurs'	Place Value (within 50) Length, Height, Mass & Volume
Summer Term 1	Writing to Persuade: Pirates love Underpants Writing to Entertain: The Pirates Next Door	Multiplication and Division Fractions
Summer Term 2	Writing to Inform: The Lighthouse Keepers Lunch Writing to Entertain: Rain Before Rainbows	Position and Direction Place Value (within 100) Measurement: Money & Time

# Enrichment

Our Vision: Children entering Berewood Primary School will find a world of learning opportunities to **inspire their awe and wonder**. Our overall aim is to be the very best school we can be, as we believe it's every child's first chance at formal education and they deserve nothing but the best. We want our pupils to develop a **lifelong love of learning** that will facilitate them to be people who are **inspired and excited** to make a difference to their lives and the lives of those around them.

## Exciting opportunities that Year 1 will bring....

Fairy Tale dress-up day

Baking ( gingerbread biscuits)

Local post box- letter posting

Trip to Sir Harold Hillier Gardens as part of our Plants topic.

Bread making- during RE

Pirate dress up day/pirate shanty show for parents

Science day

'Fly to Peru' as part of Paddington topic

# Routines



Maple – Tuesday/Wednesday  
Willow – Tuesday/Wednesday



School day: 8.35am – 3.20pm

In Year 1, we assume all children will be dropped off and collected by a known parent/carer from the classroom door unless we are told otherwise.



## Spelling

Your child/ren will now come home with spelling homework every Friday, to be returned the following Friday. These could be tricky words, phonic related words or spelling rules.





## Reading

Children will receive books matched to their phonic ability. Please **read at least 4 times per week** and record in reading journal. Please ensure your child brings in their reading journal everyday with all books returned on Friday.

# Year 1 Phonics Screening

The Phonics Screening Check is a test for children in Year 1. Children take it during June in a one-to-one setting with a teacher.

During the Phonics Screening Check, children are asked to read (decode and blend) 40 words. Most of these words are real words but some are alien words-made up words that contain Phase 2 – 5 sounds. These words are included to ensure that children are using their decoding skills and not just relying on their memory of words they've read before.

in	ot 
at	vap 
beg	osk 
sum	ect 

If your child does not meet the pass mark for phonics screening, they will retake it again in Year 2 Summer term.

You will get your child's results at the end of year.

Phonics  
Screening

# Grow the code - Little Wandle

During phonics lessons and writing children will use the 'grow the code' chart to support them when spelling and segmenting unfamiliar words. Your child has already been taught Phases 2 -4 in Reception and will be taught all of Phase 5 by the end of Year 1.

Grow the code grapheme chart

Phase 2, 3 and 5

s ss c se ce st sc	t tt	p pp	n nn kn gn	m mm mb	d dd	g gg	c ck cc ch	r rr wr	h h	b bb	f ff ph	l ll le al	j j g dge ge	v vv ve
w wh	x	y	z zz s se ze	qu	ch tch ture	sh ch ti ssi ci	th	ng ng	nk nk	a a	e e ea	i i y	o o a	u u o-e ou
ai ay a a-e eigh aigh ey ea	ee ea e e-e y ey	igh ie i i-e y	oa o o-e ou oe ow	oo ue u-e ew ou ui	yoo ue u u-e ew	oo u* oul	ar a* al*	or aw au aur oor al a oar ore	ur er ir or	ow ou	oi oy	ear ere eer	air are ere ear	zh su si

# Supporting your child at home



cow /ow/  
snow /oa/



Please bring back your spelling homework on Friday morning.

Week beginning	Practise 1	Practise 2	Practise 3	Practise 4
Look and say 👁️👁️	Look, say and write 👁️👁️✍️	Look, say cover, write, check ✍️	Look, say cover, write, check ✍️	Look, say cover, write, check ✍️

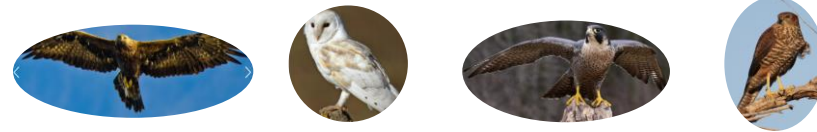
Underlined = focus grapheme

Red = most challenging part of the word



# Houses and House Points

At Berewood we have 4 houses: **Eagles**, **Owls**, **Falcons** and **Hawks** that are led by House Captains and Vice Captains from Year 6. All children work collectively to earn points for their house and ultimately try to be the winning house at the end of the academic year.



Children are given house points in school for many reasons. These can include following the Berewood Bonds, completing a piece of amazing work by being a resilient, reflective thinker or for being a kind friend. Every time a child earns a house point, it is recorded on their house point card. When the slots are full, they attend our Celebration Assembly to celebrate their success and receive their certificate.

In Celebration Assembly, the running total of points is also shared for each of the houses and our house captains share encouraging words and reminders to follow the Berewood Bonds and for all children to keep trying their best.



**Berewood Primary School**  
**House points**

Name: \_\_\_\_\_  
Class: \_\_\_\_\_

Working towards a bronze certificate


Card completed on: \_\_\_\_\_  
Head teacher signature: \_\_\_\_\_



# Berewood Bonds

We have three school rules at Berewood Primary School that all behaviour - positive and negative - is linked to and built upon.

**We are Kind and helpful**



**We are respectful and safe**



**We are resilient and hardworking**



# Uniform Reminders



Tie it up!



No smart watches please



Keep it plain!

# Attendance Matters



## Attendance Matters at Berewood

We are very proud of our attendance at Berewood Primary School. We aim to maintain our high standards for attendance and punctuality, because we understand the valuable role good attendance plays in supporting the children's learning and progress. The expectation is that every child's family strives to obtain above 96% attendance (7 days absence across the school year) for their child.

## The Importance of Good Attendance

It is a legal duty of parents to ensure that their child/children attend school. Missing a few days of school here and there may not seem a big deal, but research shows that it can have a significant impact on children's learning.

- Children who miss a substantial amount of school fall behind their peers, and struggle to catch up. Most of the work they miss is never made up, which can lead to big gaps in their learning.
- Friendships can also be affected by persistent absence, too: it can be hard for a child who misses lots of school to form relationships with their classmates.
- 90% attendance may sound good. However, this is the equivalent of missing a half-day of schooling EACH WEEK. If this continues every year, then a child with 90% attendance will miss HALF A YEAR's schooling by the start of Year 5 and a WHOLE YEAR's schooling by the time they start Year 10.
- Pupils with less than 90% attendance stand only a 35% chance of achieving five or more good GCSEs, compared to 72% of those who miss fewer than 5% of school

## Reporting Absence

If your child is unable to attend the school, then this will need to be reported. Please telephone the school on the same day before 9.00am and inform the school of the reason. Telephone: 02394 006070