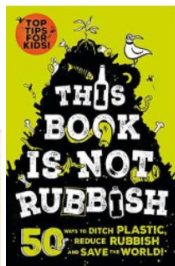
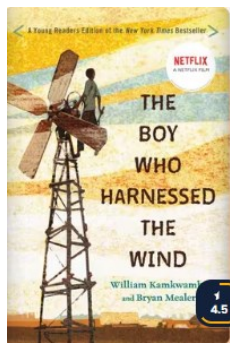
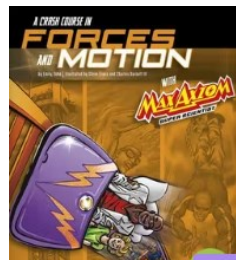


### Theme Overview

“Full of Beans” is a thematic unit, with a key focus on geography and conservation. We will begin by learning about different types of beans, how and where beans are grown and their nutritional value. We will go on to look at beans as a source of energy, before moving on to learn about energy sources generally, both renewable and non-renewable. A business enterprise element enables them to create and sell their own product.

### Recommended Reading...



Access books online for free through Hampshire School Library Service. Ask your child's teacher for their barcode/login information.

### What we should know

#### Types of Beans

Beans are grown all over the world. They grow best in full sun, planted in well-drained and warm soil. Beans are one of the world's oldest cultivated crops. There is evidence of bean cultivation going back 7,000 years! Well-known types of beans that are grown include broad, green, butter (lima), black, kidney and chickpeas.

Cacao/cocoa (chocolate) beans and coffee beans are used to make some of our favourite food and drink.

Beans are high in fibre, protein and carbohydrates, which means they are a great source of energy.

#### Key Bean Facts

Beans are part of the legume family of vegetables. Legumes are plants with double-seamed pods containing a single row of seeds.

There are two main types of beans: green/snap (the pod can be eaten) and shell/dried (just the seeds are eaten).

Beans are one of the healthiest foods we eat because they are naturally low in fats and provide important nutrients.



#### Key Energy Sources

Food energy is measured in calories (kcal).

Fossil fuels (formed from the remains of animals and plants that lived millions of years ago), like oil and gas, provide us with large amounts of energy, but also cause pollution.

Countries in the Middle East, such as Kuwait, have developed into the richest countries in the world because of their oil supply.

Nuclear power is created from the release of energy from nuclear reactors. These reactors usually use uranium or plutonium.

Only a small amount of fuel is needed to produce the energy. Nuclear power produces around 10% of the world's electricity.

It is a cheap way to produce electricity, but nuclear waste is highly radioactive and accidents and leaks can be deadly and their effects last for a long time.

Natural resources—such as solar, wind and water - also provide us with energy, but they are sustainable and are much better for the environment. However, they are expensive to set up, solar energy is only produced in daylight hours and the wind does not always blow!

## Key Vocabulary you should discuss with your child

**Calorie:** a unit of energy, often used as a measurement of the amount of energy that food provides

**Cultivation:** growing crops on land

**Consumption:** the action of using up a resource

**Energy:** the power from something such as electricity or oil that can do work, such as providing light and heat

**Fuel:** a material, such as coal, gas or oil, that is burned to produce heat or power

**Nutrients:** a substance that is necessary for healthy growth and development

**Plutonium:** a radioactive metal

**Pollution:** damage caused to water, air, etc. by harmful substances or waste

**Radioactive:** releases dangerous energy

**Sustainable:** causing little or no damage to the environment and doesn't use up natural resources

**Uranium:** a radioactive material

## Concept Flow

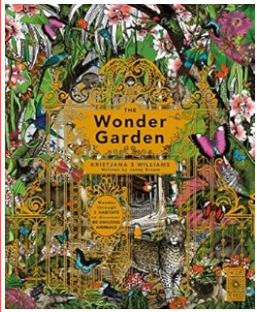
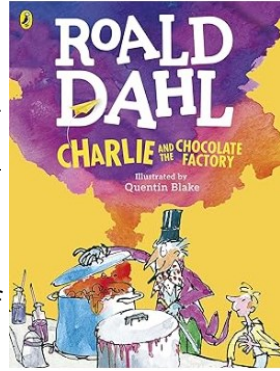
- To learn about different types of beans
- To know how and where in the world beans are grown and how to plan an experiment to grow beans
- To know about different energy sources and where they come from
- To learn more about renewable and non-renewable energy and the advantages and disadvantages of each source
- To learn how to save energy and the effect this will have on the environment (local/national/global level)



Please talk to your children about the information on this sheet. The more children discuss their learning the more likely they are to embed the learning to their memory. If you have any questions please don't hesitate to contact your child's class teacher.

**English****Writing**

As we come to the end of our Year 6 journey, the children will show off the writing skills they have learned this year on two wonderfully creative pieces of writing. They will be designing their own “Willy Wonka”-inspired chocolate bar or sweet, and writing a recipe explaining how to make this. Following this, the children will write non-chronological reports about magical creatures that live in a mythical habitat based on the beautiful book *The Wonder Garden*.

**Guided Reading**

Tying in with our writing unit, we are reading *Charlie and the Chocolate Factory* by Roald Dahl. We are focusing on using all the guided reading skills we have practised this year, and thinking about how to apply them to a childhood favourite such as this.

**Maths**

For the next seven weeks, children will focus on applying the mathematical skills they have learnt to real life situations. We will look at the idea of best value, and use our addition and multiplication skills to calculate and compare the cost of different holidays. We will also use our knowledge of ratio to scale up or down recipes.

Following the Year 6 Enterprise Fair, we will look at the money taken by each stall, comparing data and calculating totals. We will represent this data different ways such as in bar graphs and pie charts.

**PE**

Our PE days are Monday and Wednesday. The children will be taking part in athletics games.

We will continue practising batting and fielding in our rounders matches.

**PSHE**

As part of our SRE topic, children will learn the difference between healthy and unhealthy relationships.

**Science**

Within the SRE topic, children will learn about the changes that happen to bodies and emotions during puberty. They will learn how babies are created, how they grow and how they are born.

**RE**

We will learn about the importance of ritual in the Hindu Arti ceremony.

**Music**

As we prepare for our Leaver's play, we will rehearse and perform the musical *Joseph* at the end of term.

**Topic**

Year 6 will host their Enterprise Fair with the aim to make a profit which they can spend on their Leaver's Day at the end of term.

**DT**

Linking in with our “Full of Beans” topic, we will research and create our own savoury bean-based dishes.